

# UniTracking VTU GPS



**TRACK, MONITOR, AND CONTROL YOUR VEHICLE & ASSETS OVER THE INTERNET**

UniTracking VTU provides a diverse set of services that enables real time GPS tracking, & control of vehicles, and assets over the internet. Cars, Trucks, Motorcycles, Personal Water Craft, Boats, ATV's, Recreation Vehicles, and Freight or construction Trailers are just some of the items we protect.

## Vehicle Alarm Monitoring

We all know having your vehicle broken into or stolen can cost you money, and inconvenience! With UniTracking VTU standing guard and protecting your vehicle against break and enter, or theft, you will have peace of mind and reduce your chances of being a victim. UniTracking will automatically notify you if your vehicle is under a security threat based on the alarm being activated. You will be notified of alarm activation with attempted break and enter and theft.



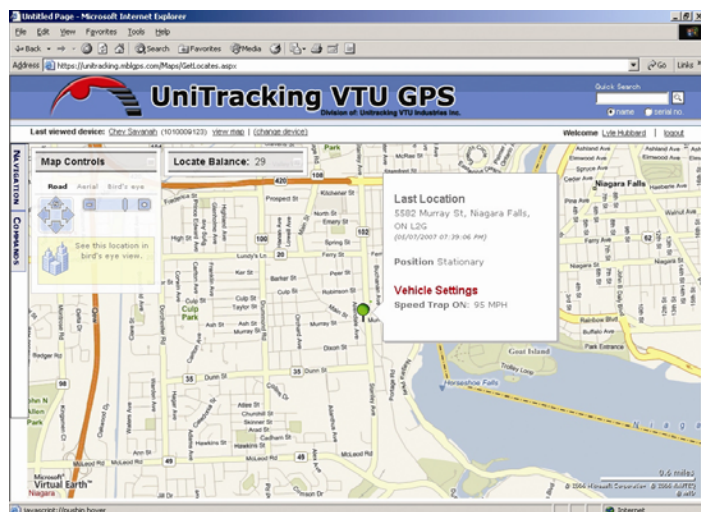
UniTracking VTU will notify within moments of the alarm trigger. You simply choose e-mail, cell phone or pager to receive the security threat notification. Similar to your home or office alarm system, UniTracking VTU monitors your vehicle alarm 24 hours a day with optional call center monitoring.

## Internet based GPS Tracking & Control

With UniTracking VTU, you have the ability to track and control your vehicle over the Internet, and can pinpoint its location on demand. In addition the vehicle can be tracked and controlled by contacting our 24 hour call center. UniTracking VTU works wherever there is cellular service which means your coverage is the best available on the market today.

## How UniTracking VTU Works

UniTracking VTU hardware is installed in one of many hidden locations in the vehicle and integrated with car sensors and controllers (e.g., alarms, horn, and starter). When an alarm event is triggered, a notification is e-mailed or sent to your cell phone in text message format (Short Message SMS). Likewise a user can access the network operations center via phone or web browser to track or control the vehicle. In simple terms, it's like having your vehicle alarm monitored, much like your home or business alarm system with the added ability to track and control the vehicle over the internet.



## On Demand Tracking & Auto Tracking

You are able to locate your vehicle position through your internet portal. This is done by requesting a position update. You can set the UniTracking device to auto track the vehicle in the event of theft or other situations where you need to know where the vehicle is on a pre programmed time interval. Intervals are as little as every 2 minutes, up to every 24 hours.

## Geo- Fencing

Geo Fencing draws an electronic fence around the vehicle. When the fence is breached, you will receive a notification of the perimeter violation. When the vehicle travels into or out of the land mark zone, you will be notified and the incident and it will be logged for followup.

## Speed Detection with Reporting

With UniTracking installed in your vehicle, you will be able to detect and receive notification when your vehicle exceeds your pre set speed threshold.

## Starter Interrupt

In the event your vehicle is towed or actually driven away by a thief, you have the ability to interrupt the vehicle starter. When the vehicle comes to a safe parked position, the starter will be disabled. This will aid in quick recovery of the vehicle before significant damage is done.

## Door Lock & Unlock (locked your keys in the car?)

Unlocking of the vehicle doors can be achieved by calling our toll free live call center or requesting the action through your internet portal. Rather than waiting for your auto club, we can unlock your doors within seconds.

## Competitive Comparisons

UniTracking does more than just vehicle theft recovery. We offer alarm monitoring, GPS positioning, Vehicle monitoring, Vehicle abuse speed notification. Unlike many of our competitors, that don't offer 24/7 call center support and Vehicle theft recovery assistance, we feel we offer a premium quality product and service unmatched by anyone else in the industry. We encourage you to compare our service and product against any competitor for value and service.



**Contact UniTracking or Your Authorized Dealer**

UniTracking VTU Industries Inc.  
Web: [www.unitracking.com](http://www.unitracking.com)

Tel: 604-777-9915  
Fax: 604-939-1267

Toll Free 1-866-800-2034

## **SPECIFICATIONS:**

GPS Receiver: L1 1575.42 frequency. C/A code Parallel 12 channel tracking.

Modem: GSM Quad-band 850/1900/900/1800  
GSM/SMS and GPRS messaging supported

Accuracy: Horizontal: < 6 meters (50%)  
Altitude: <11 meters (50%)  
Typical 10 meters (30 feet) 95% of the time

Communications: Cellemetry Communications Network

Inputs (3): Alarm sense and 2 Aux. Inputs (2 sec.)

Outputs (1): Solid-state switch to ground opto-isolated, latched Output. Used for starter disable or remote start connection

Power: 12 VDC operating

Power source: Vehicle Battery power with battery back up (stand-by and rechargeable) good for 100 locates

Current Draw: 3mA in sleep mode and 15 mA with the GSM radio active.

Temperature: Operating: -10° C to +55° C

Humidity: 5% - 95% non-condensing at 40° C

Altitude: -200 to +5,000 meters

Packaging: High-impact High-density Lexan case, water and dust resistant

Size: Small size: 5.78 x 2.99 x 1.44 inches  
143 mm x 76 mm x 38 mm

Weight: 205 grams Less than 7.2 ounces without battery

Antenna: Internal optional GPS antenna

Wiring Harness: Color coded wire harness

## **FEATURES & BENEFITS**

- **Internet Based Vehicle Tracking & Control** - UniTracking VTU reports vehicle date/time, location, speed and direction via the Internet. You can also track the vehicle, and control functions such as lock and unlock, Starter interrupt, set up of Geo-Fencing and all reporting functions through the Internet.
- **Alarm Integrations** - The vehicle's aftermarket or factory alarm can be integrated with the UniTracking system which will send an alert to the vehicle owner to notify them of a security threat or alarm activation.
- **Starter Interrupt** - The VTU can disable and enable the vehicle's starter while to protect against a theft attempt, or quick recovery in the event of theft.
- **Geo-Fencing** - Reports position of the vehicle when a geofence containment boundary is crossed. Detect breach of established fence.
- **Scheduled Hours of Operation** - Establish times when vehicle or equipment is authorized to be operating and receive notification if operation breach outside scheduled hours occurs. Detect moonlighting with your equipment or unauthorized operation after hours.
- **Motion Detector** - Reports a motion message if motion is sensed outside of authorized operating hours.
- **On-Demand Position Report** - Reports the position of the vehicle when commanded by the end user from the Web Page or from an IVR.
- **Position on Interval Autotracking** - Reports vehicle position on a timed interval. The VTU can Auto-Report its location once every 5, 15 or every 30 minute intervals.
- **Low Battery Message** - Reports the capacity of the vehicle's battery after the battery voltage has dropped below a pre-determined level. UniTracking's VTU automatically switches to its backup battery if the vehicle's battery runs down or is disconnected. A low battery message will be sent to the vehicle owner.
- **Speed Threshold** - Reports the vehicle's speed after a threshold has been breached. The VTU tracking device detects a speed violation and sends a speeding alert to the vehicle owner.
- **Electronic Night Watchman** - Night Watch detects movement of the vehicle during unauthorized hours of operation. You set the hours and UniTracking takes over from there. You will receive a text message or email if the vehicle moves based on the time clock you set.
- **24/7 Call Center Support with theft Recovery Help** - UniTracking provides a 24 hours call center for services when you don't have access to a computer. This service is optional and helps with theft Recovery, Door Unlocking, Starter disable, and location requests.
- **Automatic Vehicle Battery Disconnect Priority Start** - If you leave your lights on or consume excessive battery power, the Optional Priority Start Module will disconnect your battery to preserve starting power. UniTracking provides automatic power management to eliminate dead battery conditions.

### **Contact UniTracking or Your Authorized Dealer**

**UniTracking VTU Industries Inc.**

**Web:** [www.unitracking.com](http://www.unitracking.com)

**Tel:** 604-777-9915

**Toll Free** 1-866-800-2034

**Fax:** 604-939-1267

Functions & Capabilities	UTK-V120 TOVP Hard wire	UTK- V420 FFU Hard Wire
<b>Power Management</b>		
Powered by Vehicle Battery / Electrical System	Yes	Yes
Built in Backup Battery	Yes	Yes
<b>Internet Based Functions</b>		
Real Time On Demand, Locate Vehicle or Asset Over the Internet *	Yes	Yes
Theft Alarm Integration Capability	No	Yes
Geo Fence Setup with Notification*	Yes	Yes
Check Current Vehicle Speed & Heading	Yes	Yes
Lock & Unlock Vehicle Doors *	No	Yes
Disable & Enable Car Starter *	No	Yes
Set Auto Tracking On/Off with position on interval *	Yes	Yes
Set Speed Alert with notification *	Yes	Yes
Motion Detection & Notification (Outside Scheduled Hours of authorized Operating) *	Yes	Yes
<b>Notification Capability</b>		
Theft Alarm Trigger Detection With Notification *	No	Yes
Geo-Fence Violation With Notification *	Yes	Yes
Over Speed Violation (Speed Trap) With Notification *	Yes	Yes
Low Battery Notification *	No	Yes
Motion Detector & Notification *	Yes	Yes
<b>Control Interface Functions</b>		
Web Based Interface	Yes	Yes
Optimized web interface for web enabled PDA devices,	Yes	Yes
Optional Toll free 24 hour Live Theft Recovery Support Option.	Optional	Optional
Optional Toll free 24 hour Live Call Center Support (60 minute	Optional	Optional

\*\* Currently in Development

\* Consumes one (1) transacti

<b>Product Explanation</b>		
<b><u>Product Number</u></b>	<b><u>Suggested Applications</u></b>	<b><u>Product Description</u></b>
<p><b>UTK-V120 TOVP</b></p> <p>Tracking Only Unit with web based functions</p> <p><b>Hard Wire</b></p>	<ul style="list-style-type: none"> <li>• Vehicle Tracking</li> <li>• Motorcycle, Boat ATV Tracking</li> <li>• Powered Asset Tracking</li> <li>• Trailer Tracking</li> <li>• Heavy Equipment Tracking</li> <li>• Computer Servers, Bank Machines</li> <li>• BHPH Sub Prime Vehicle Recovery</li> <li>• Sky Lift Platforms such as Genie lifts.</li> </ul>	<p>UTK-V120 TOVP is a simple two wire installation. There is an external hidden antenna, for ease of installation. Used for Locate and tracking purposes only. Simple 30 minutes to 1 hour install time depending on vehicle. The unit is fully active on the GSM digital network.</p> <p>This unit is powered by the vehicle 12 volt battery. and contains an internal backup battery. This unit can be used to track mobile assets, or other powered assets in the event of theft. This unit must be hard wired to the 12 volt vehicle power source.</p>
<p><b>UTK- V420 FFU</b></p> <p>Full feature Unit</p> <p><b>Hard Wired</b></p>	<ul style="list-style-type: none"> <li>• Vehicle or Powered Asset Tracking</li> <li>• Trailer Tracking</li> <li>• Motorcycle ATV's</li> <li>• Heavy Equipment</li> <li>• Leased Industrial Equipment</li> <li>• Sky Lift Platforms such as Genie lifts.</li> <li>• BHPH Sub Prime Vehicle Recovery</li> </ul>	<p>Used for comprehensive Vehicle Security for vehicles where starter disable Alarm Integration. This unit is full featured unit with all available functions included.</p>

UTKBRANDED RELEASE

## **Unitracking Mobile In-Car Module**

The Unitracking Mobile in-car module incorporates digital cellular and GPS location tracking technologies to deliver a robust vehicle tracking & security offering. Incorporation of single-processor board integration will provide improved functionality and power conservation. GSM/SMS and GPRS capability will provide cost-effective wireless communications. Utilizing advanced motion filtering algorithms, the unit will provide improved motion detection and interpretation based on pre-defined criteria. Designed to ease the pre-installation and de-installation processes, Unitracking Mobile offers flexibility to dealerships and vehicle owners. The solution also offers seamless integration with alarm systems, and features minimized power draw.

## **Global Standard Device Information**

- Main Head Control Unit GPRS tracking system, 850/1900/900/1800 MHZ
- GPS, GPRS -internal antenna.
- Optional external GPS option on V120, V420
- Internal Backup Battery (except portable battery operated unit.
- Shrink Wrap / Zip Strips Install accessory pack.
- Starter Interrupt Relay on V420
- Tilt Detection Sensor Module
- 12 months network connection service included. Pay as you go transactions.
- Firmware license, Programming and Network Activation  
Installation and Instruction manual

## **Physical Characteristics Version - 1.0**

- Small Size: 5.78 x 2.99 x 1.44 inches.
- Weight: 205 grams (7.2 oz)
- High-density plastic case housing, water and dust resistant.
- Molded cable connection standard.
- Stand alone wiring harness allowing pre-installation for easy module install.
- Internal antenna for GSM communications.
- Internal GPS antenna with external GPS antenna for flexibility.

## **Network Technology**

- GSM Quad-band 850/1900/900/1800
- GSM / SMS and GPRS messaging supported
- Cingular Network Certified
- Certified for Latin America carriers
- FCC, PTCRB, Certified
- Certified for Canadian Carriers

## **Environmental Specifications**

Temperature Operating	-25°C to +55°C
Humidity	5% to 95% RH non-condensing at +40°C
Casing	IP 55 standard when used with batteries

Vibration*	0.008 g <sup>2</sup> /Hz	5 Hz to 20 Hz
	0.05 g <sup>2</sup> /Hz	20 Hz to 100 Hz
	-3 dB/octave	100 Hz to 900 Hz

Shock\*

Operational	40g for 11 milliseconds
Non-operational	75g for 6 milliseconds

## **Electrical Characteristics**

Primary Power	9-32 VDC
Backup Battery Life	Up to 48 hours, (10 reports/day, GSM coverage, -130 dBm GPS)